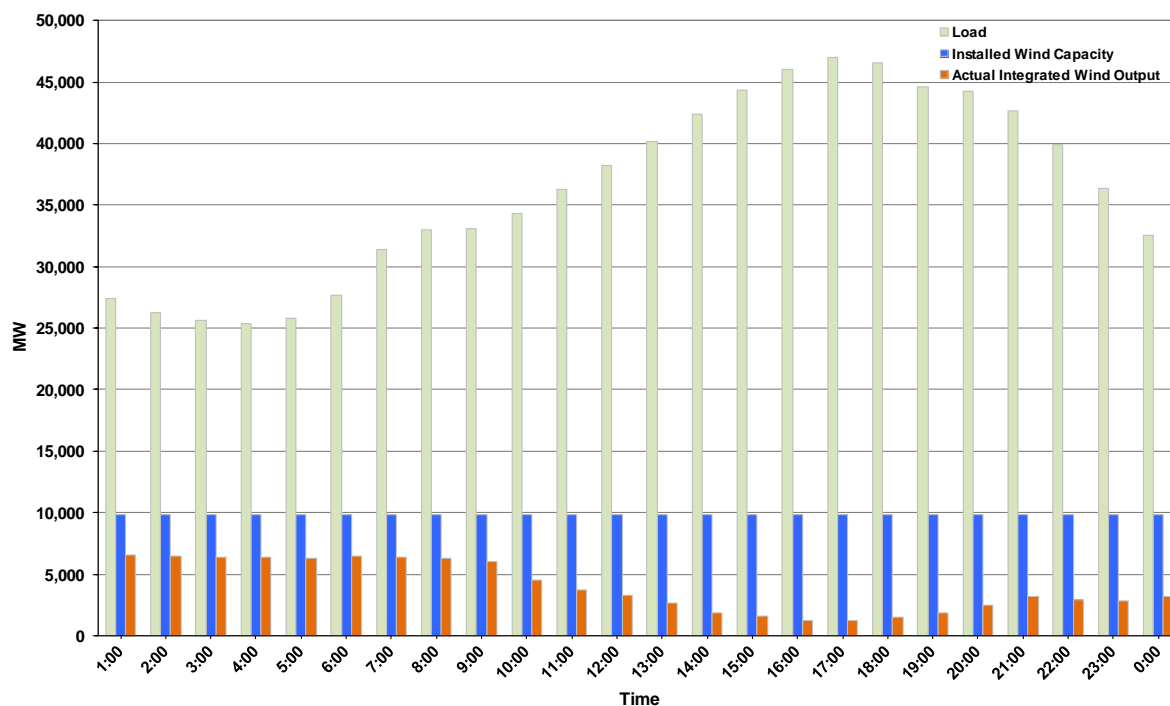




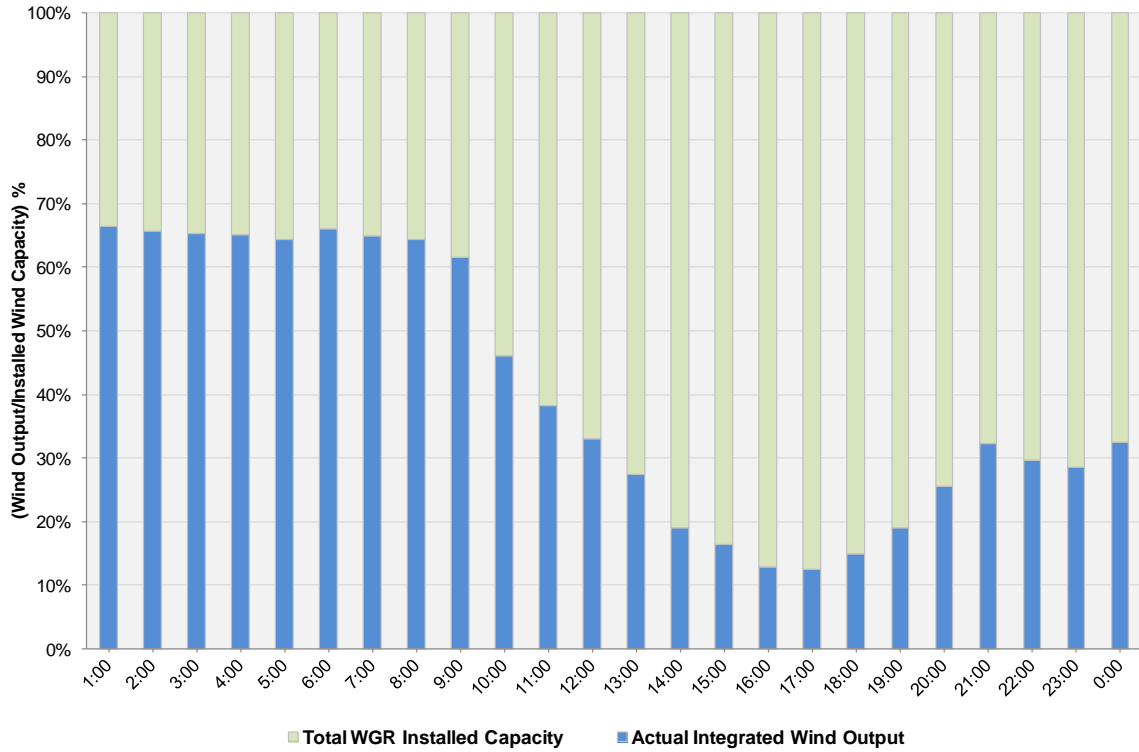
## ERCOT Grid Operations Wind Integration Report: 10/17/2012

Peak Load	<b>46,993 MW</b>
Load Peak Hour (HE)	<b>17</b>
Wind over Peak	<b>1,221 MW</b>
Wind Record 06/19/12	<b>8,368 MW</b>
Max Wind Value	<b>6,672 MW</b>
Wind Peak Time	<b>00:25</b>
Wind Integration %	<b>24.26%</b>

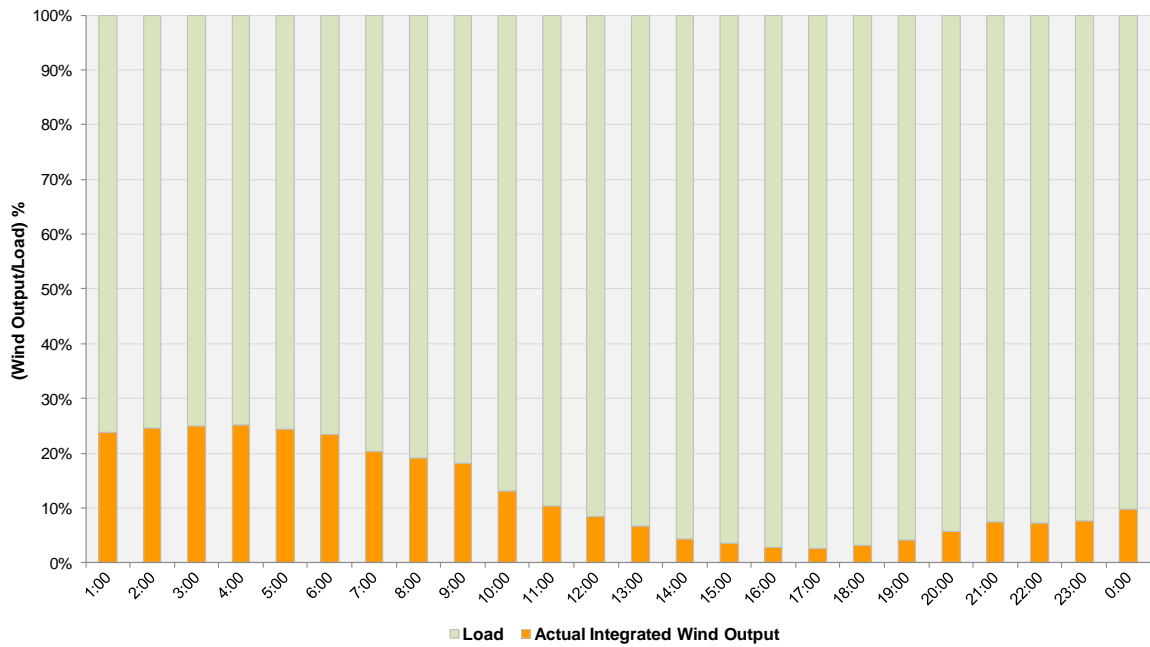
**Hourly Average Actual Load vs. Actual Wind Output  
10-17-2012**



**Actual Wind Output as a Percentage of the Total Installed Wind Capacity**  
**10-17-2012**



**Actual Wind Output as a Percentage of the ERCOT Load**  
**10-17-2012**



ERCOT Load vs. Actual Wind Output 10/10/2012 - 10/17/2012

